



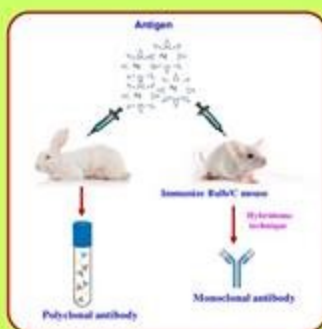
## Assist. Prof. Dr. Panida Khunkaewla

Dr. Scient.Med. (Immunology), Medical University of Vienna, Austria  
M.Sc. (Biochemistry), Chiang Mai University, Thailand  
B.Sc. (Biochemistry and Biochemical Technology), Chiang Mai University, Thailand

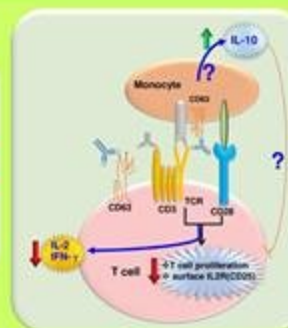


### Areas of Research

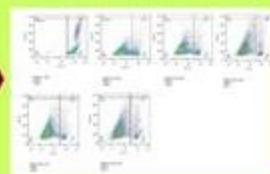
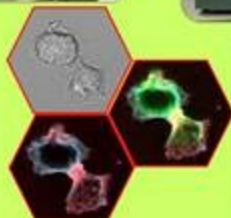
- Polyclonal and monoclonal antibody production for research and clinical applications.



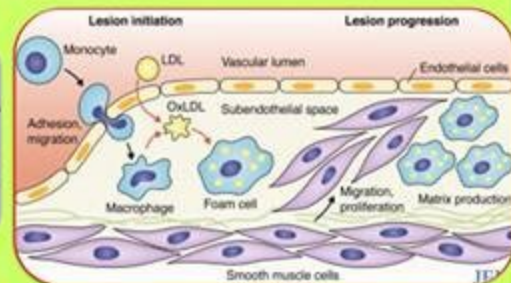
- Biochemical and functional analysis of leukocyte surface molecules in regulation of the immune system
- Function of the lysosomal associated molecule-3 (CD63) on innate and adaptive immune responses.



- Immunofluorescence staining.
- Cell analysis by laser scanning microscope
- Cell analysis by flow cytometer



- LDL and atherosclerosis: Molecular mechanism for plaque formation and stability



### Selected Publications

- Teanphonkrang, S., Janke, S., Chaiyen, P., Sucharitakul, J., Suginta, W., **Khunkaewla, P.**, Schuhmann, W., Ruff, A., Schulte, A. Tuned Amperometric Detection of Reduced  $\beta$ -Nicotinamide Adenine Dinucleotide by Allosteric Modulation of the Reductase Component of the  $p$ -Hydroxyphenylacetate Hydroxylase Immobilized within a Redox Polymer (2018) *Analytical Chemistry*, 90 (9), pp. 5703-5711.
- Wansook, S., Pata, S., Kasinrek, W., and **Khunkaewla, P.** Biochemical and functional analysis of COS3A, a novel CD63-specific monoclonal antibody. *Asian Pac J Allergy Immunol.* 2016 Dec;34(4):306-313.
- Chaocharoen, W., Suginta, W., Limbut, W., Ranok, A., Numnuam, A., **Khunkaewla, P.**, Kanatharana, P., Thavarungkul, P., Schulte, A. An electrochemical detection of the disease marker human chitinase-3-like protein 1 by matching antibody-modified gold electrodes as label-free immunosensors. *Bioelectrochemistry*. 2015; 101: 106-103
- Ranok, A., **Khunkaewla, P.**, Suginta, W. Human cartilage chitinase 3-like protein 2: Cloning, Expression, Production of Polyclonal and Monoclonal Antibodies for Osteoarthritis Detection and Identification of Potential Binding Partners. *Monoclon Antib Immunodiagn Immunother (Formerly Hybridoma)*. 2013; 32(5): 317-325
- Suginta, W., **Khunkaewla, P.**, Schulte, A. Electrochemical Biosensor Applications of Polysaccharides Chitin and Chitosan. *Chem. Rev.* 2013; 113(7): 5458-79